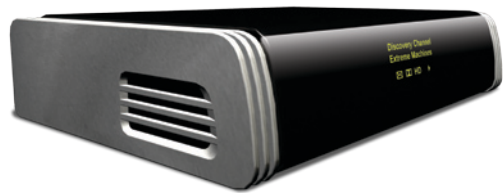


[www.lyngbox.com/technical\\_specifications](http://www.lyngbox.com/technical_specifications)



The LyngBox is a high-end HDTV receiver and recorder for satellite and terrestrial transmissions. With the LyngBox you are ready to enter the future. The receiver supports the newest technical standards such as:

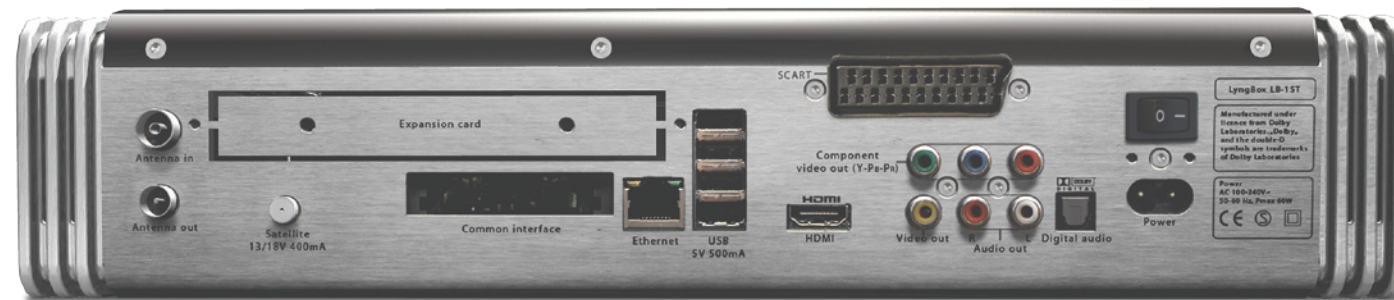
- DVB-S2 for satellite transmission
- Decoding of H.264/MPEG-4 AVC in HDTV resolutions
- Digital HDMI connectivity to your TV

Whilst the LyngBox is state-of-the-art for compatibility with all the latest peripherals, it is equally usable with older equipment.

The LyngBox is designed to suit users with varying levels of technical interest. Both novice and advanced users will be amazed by the simplicity of installing and updating channels,

and by the possibilities for controlling recordings remotely from any PC. The advanced user will inevitably be drawn to the huge range and variety of information that can be accessed with the press of a button, such as FEC, SID, PID etc.

What makes the LyngBox so easy to use and operate, and is also the source of a great variety of information, is the integration with LyngSat Network. LyngSat Maps is used to calculate which satellite signals can be received and directs the LyngBox to download channel information for the available satellites from LyngSat. The information is updated daily. You will always have the latest channels and won't have to suffer when your favourite channel changes its' transmission configuration.



The integration with LyngSat Guide gives you easy access to TV guides for a great number of channels. When browsing the guide with the LyngBox you have access to one-touch recording. LyngSat Guide can also be reached on the web using a regular PC. If you logon with your LyngBox id and password you can remotely control recordings for your own LyngBox at home. The LyngBox will regularly connect to the website to look for new recordings. You are of course not limited to the channels in LyngSat Guide as broadcasted guide information can be used as well.

The Media Manager in the LyngBox can access recordings and photos on connected USB devices, as well as transfer files between the internal hard disk and connected devices. The time shift functionality lets you pause your favourite TV show and continue to watch later.



A universal remote control is supplied as standard. This way you can use the remote control to operate not only your LyngBox, but also your TV-set and DVD player. A wireless keyboard can be added as an accessory. When using a keyboard, channel navigation is even more powerful. You can select channel by simply typing the beginning of the channels name on the keyboard.

# technical data

## Video formats

Supported resolutions:

- 576i, 576p, 720p, and 1080i

## Video output

HDMI, Component (Y-P<sub>B</sub>-P<sub>R</sub>), SCART, and

Composite

16:9 and 4:3 TV screen format

## Audio output

Optical S/PDIF (PCM or Dolby Digital passthrough)

Analog stereo audio (2 x RCA)

## Video decoder

- H.264/MPEG-4 AVC

- MPEG-2

## Audio decoder

- MPEG-2

- Dolby Digital (downmix)

## Connectivity

100BaseT Ethernet port

4 x USB 2.0 port for external devices

## Satellite input

Supports DVB-S and DVB-S2

Modulation 8PSK, QPSK

Symbol rate (Msymbols/s):

- DVB-S 1-45

- DVB-S2 10-30

Frequency range 950-2150 Mhz

DiSEqC 1.1 and 1.2

LNB voltage 13/18 V

Tone control 22 kHz

Support for C and Ku band

## Terrestrial input

Frequency bands UHF, VHF

Channel bandwidth 7,8 MHz

Antenna power 5 V

Nordig compliant

## Conditional access

2 x Common Interface slots

## Remote control

Universal remote control

Keyboard can be added as accessory

## System specification

STMicroelectronics CPU

Three cores (1x266 Mhz, 2x384 Mhz)

## System memory

RAM 96 MB

Flash 32 MB

Hard disk 160 GB

## Software

Linux operating system

Proprietary LyngBox software

## Dimensions

Size (WxHxD) 384x83x256 mm

Weight 3,8 kg

## General data

Power range AC 85-265V, 50/60Hz

DVB Subtitling support

Teletext support

OLED front panel display

Tuner expansion slot

Supports up to 50000 channels